

STANDARD PENETRATION TEST (SPT) APPARATUS

This sampler meets the requirements of IS:9640 for carrying out standard penetration tests as per IS:2131 to determine the penetration resistance of soils in-situ (N - Value)

The equipment comprises the following:-

Split Spoon Sampler

1. Split barrel 38 mm I.D. 50.8 mm OD and 500 mm long.
2. Driving shoe with hardened cutting edge.
3. Head assembly with ball valve and adpoter to fit to A-rod.

Split Spoon Sampler, with Liner

The inner diameter of split barrel is increased to accommodate a brass liner. Supplied with one liner, 35 mm I.D. and 38 mm O.D.

Accessories:

1. Driving shoe for 34.80 and 34.85
2. Linear for 34.85

Piston Sampler

It is a thin walled sampler carrying a piston attached to a piston rod, which extends through the hollow drill rods to the ground surface. A locking ball cone clamp provided in the sampler rear prevents the piston from sliding down after the sample has been collected.

It consists of

1. Sampling tube 50.8 mm inside dia x 600 mm long - 1 No
2. Piston with piston rod - 1 No.
3. Adapter for connecting rod - 1 No.
4. Sampler head with adapter for A-rod and ball cone clamp - 1 No

Drop Hammer

Weight 65 kg. Complete with lifting eyes and chain.

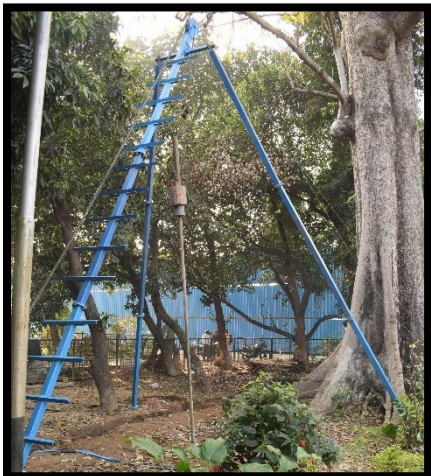
Guide Pipe Assembly

With two end caps to give a free fall of 75 cm to 100cm

Tripod Stand

With 5 meter long mild steel legs (in two pieces) with tie bolt and pulley.

Manila rope -1 No., 'A' Rod 1 Mtr. Long - 10 Nos.



Year of Purchase :

Cost :